



# MONTHLY MEMBERSHIP PROGRESS REPORT

Results as of: 12/31/2016

Multiple District 31

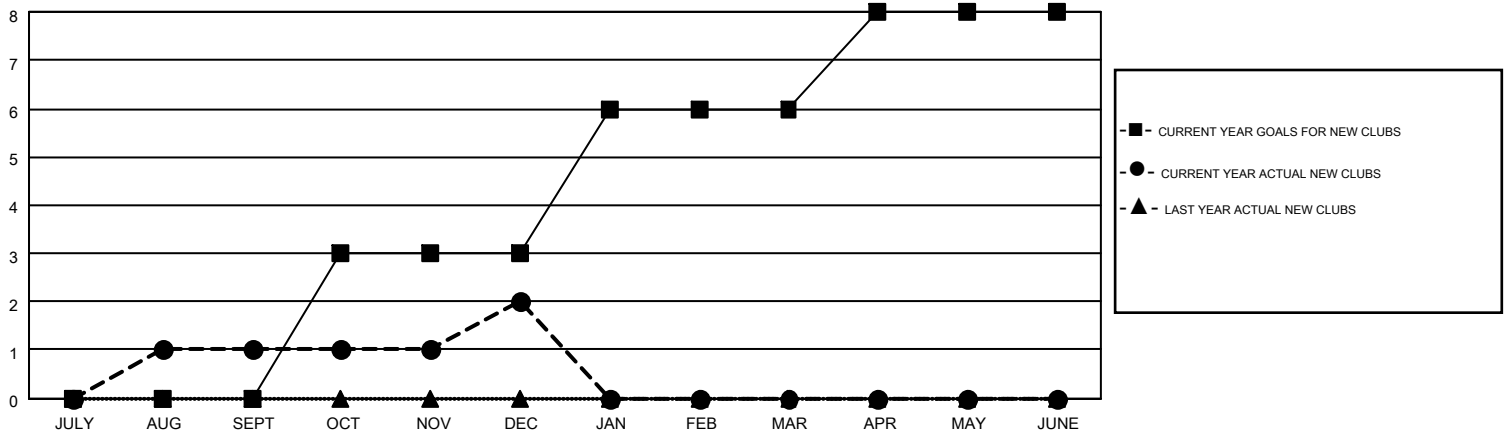
LOCATION: NORTH CAROLINA

GMT: HARVEY WHITLEY

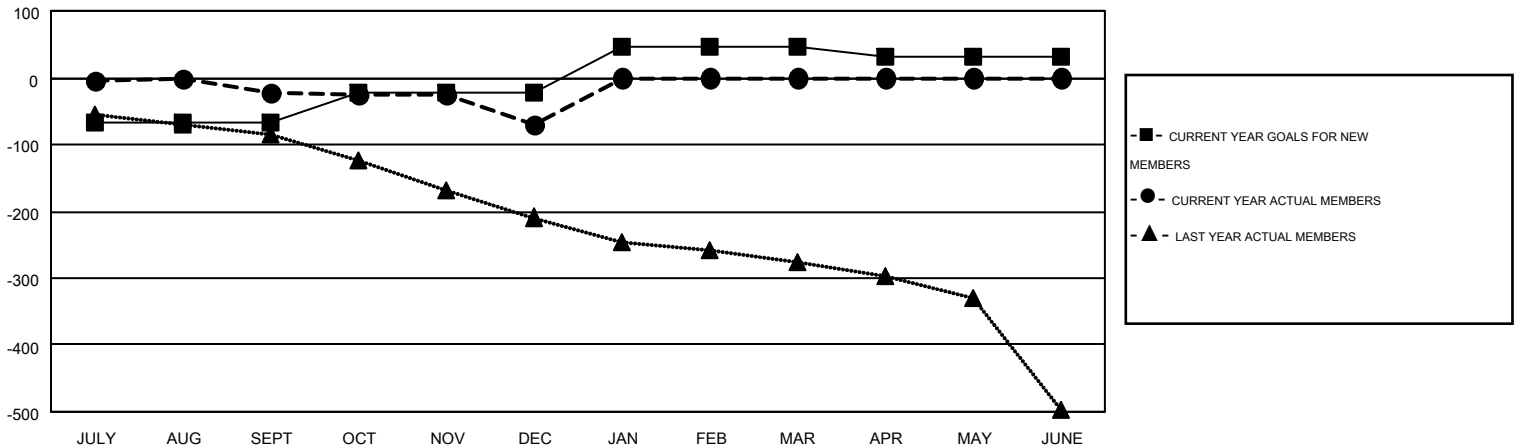
GMT CA 1

Clubs					Members				
RESULTS FOR 2016-2017					RESULTS FOR 2016-2017				
QUARTER	NEW CLUB GOAL	NEW CLUBS	DROPPED CLUBS	NET GAIN/LOSS	QUARTER	NEW MEMBER GOAL	CHARTER AND NEW MEMBERS ADDED	DROPPED MEMBERS	NET GAIN/LOSS
JULY/AUG/SEPT	0	1	0	1	JULY/AUG/SEPT	-66	211	233	-22
OCT/NOV/DEC	3	1	3	-2	OCT/NOV/DEC	43	127	175	-48
JAN/FEB/MAR	3	0	0	0	JAN/FEB/MAR	68	0	0	0
APR/MAY/JUNE	2	0	0	0	APR/MAY/JUNE	-13	0	0	0

GOALS AND ACTUAL NEW CLUBS CUMULATIVE



GOALS AND ACTUAL MEMBERS CUMULATIVE



DROPPED CLUBS: 3	110 CLUBS OF 305 ADDED 1 OR MORE NEW MEMBERS	<u>GENDER DISTRIBUTION</u>	
		MALE	4,444 (70.67%)
<u>DROPPED MEMBERS</u>		FEMALE	1,844 (29.33%)
DECEASED	69	<u>FAMILY UNIT MEMBERS</u> 1,306	
CLUB CANCELLED	2	<u>HEAD OF HOUSEHOLD</u> 639	
OTHER	337	<u>NON-HEAD OF HOUSEHOLD</u> 667	
<b>TOTAL</b>	<b>408</b>		

[CLICK HERE FOR HEALTH ASSESSMENT DATA](#)